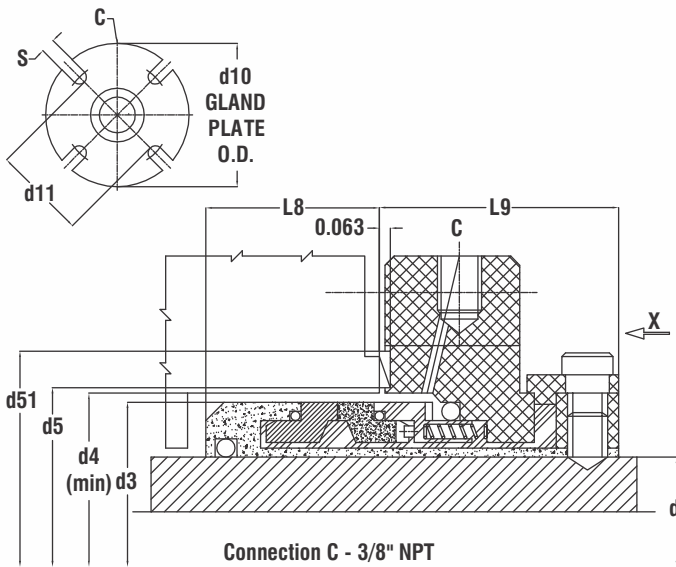


RsCS1

SINGLE CARTRIDGE W/ FLUSH



FEATURES & BENEFITS:

- ▶ One of the industry's most aggressively priced stationary cartridges
- ▶ Easy Cartridge installation
- ▶ Stationary multiple spring design
- ▶ Springs isolated from product
- ▶ Rugged face design
- ▶ Identical seal face shapes make repairs easy & economical
- ▶ Hydraulically balanced design
- ▶ Handles pressure reversals & vacuum
- ▶ Flush connection standard
- ▶ Vent & Drain connections available upon request
- ▶ Big Bore gland alternative
- ▶ Interchangeable parts with D2 dual cartridges
- ▶ User friendly setting clips
- ▶ Confined gland gaskets

OPERATING LIMITS:

- ▶ Pressure: Upto 250 PSI/17 Bar
- ▶ Temperature: -40°C to 235°C*

STANDARD MATERIALS OF CONSTRUCTION:

- ▶ **Faces:**
 - ▶ Carbon / Silicon Carbide
 - ▶ Silicon Carbide / Silicon Carbide
 - (Note: Tungsten Carbide & Antimony Carbon also available)
- ▶ **Elastomers:**
 - ▶ Buna, Viton*, PTFE, Neoprene, EPR, Kalrez*, AFLAS*, Chemraz*
- ▶ **Metallurgy:**
 - ▶ 304, 316, Monel, Alloy 20, Hast B+C*

d	d3	d4	d5	d51	d10	d11	L8	L9	S
1.000	1.595	1.625	1.771	2.106	4.000	2.224	0.952	1.460	0.551
1.125	1.708	1.750	1.909	2.830	4.125	2.421	0.952	1.460	0.551
1.250	1.865	2.000	2.037	2.362	4.250	2.500	0.952	1.460	0.551
1.375	1.950	2.000	2.145	2.593	4.250	2.696	0.952	1.460	0.551
1.500	2.172	2.250	2.368	2.736	5.000	2.815	0.952	1.460	0.551
1.625	2.283	2.375	2.460	2.854	4.500	2.972	0.952	1.460	0.551
1.750	2.401	2.500	2.578	2.992	5.000	3.062	0.952	1.460	0.551
1.875	2.537	2.625	2.755	3.110	5.250	3.188	0.952	1.460	0.551
2.000	2.670	2.750	2.834	3.267	5.500	3.307	0.952	1.460	0.551
2.125	2.795	2.875	2.952	3.386	5.750	3.503	0.952	1.460	0.709
2.250	2.913	3.000	3.110	3.504	6.500	3.622	0.952	1.460	0.709
2.375	3.037	3.125	3.228	3.700	6.500	3.818	0.952	1.460	0.709
2.500	3.288	3.375	3.464	3.858	6.500	3.976	1.311	1.622	0.709
2.625	3.410	3.500	3.543	3.937	7.000	4.055	1.311	1.622	0.709
2.750	3.562	3.625	3.780	4.252	7.000	4.370	1.311	1.622	0.709
2.875	3.685	3.750	3.905	4.377	7.500	4.614	1.311	1.772	0.709
3.000	3.795	4.000	4.188	4.944	7.480	5.079	1.311	1.772	0.709
3.125	3.937	4.125	4.307	5.062	7.677	5.197	1.311	1.772	0.709
3.250	4.045	4.250	4.425	5.181	7.677	5.315	1.311	1.772	0.709
3.375	4.170	4.375	4.543	5.299	7.795	5.472	1.311	1.772	0.866
3.500	4.350	4.500	4.681	5.437	7.795	5.591	1.354	1.772	0.866
3.625	4.438	4.625	4.799	5.555	8.071	5.709	1.354	1.772	0.866
3.750	4.547	4.750	4.937	5.692	8.189	5.827	1.354	1.897	0.866
3.875	4.670	4.875	5.059	5.826	8.189	5.945	1.354	1.897	0.866
4.000	4.795	5.000	5.157	5.944	8.583	6.063	1.354	1.897	0.866
4.250	5.045	5.250	5.413	6.181	9.000	6.625	1.394	2.094	0.866
4.500	5.295	5.500	5.669	6.456	9.500	7.000	1.394	2.094	0.866
4.750	5.545	5.750	5.905	6.692	10.00	7.322	1.394	2.094	0.944
5.000	5.881	6.000	6.122	6.751	10.00	7.322	1.394	2.094	0.944