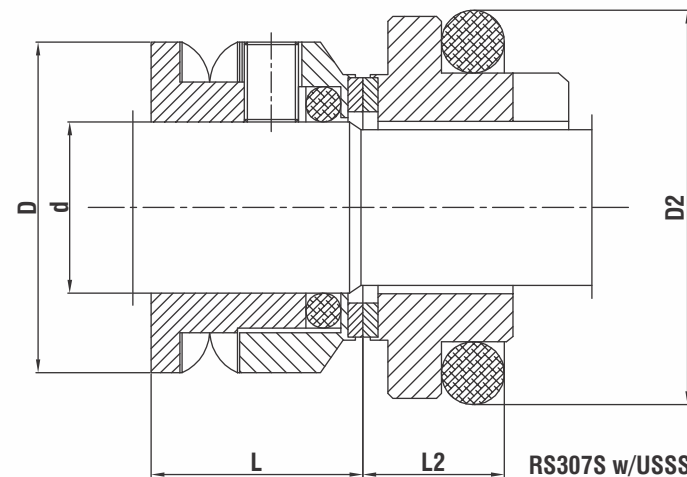
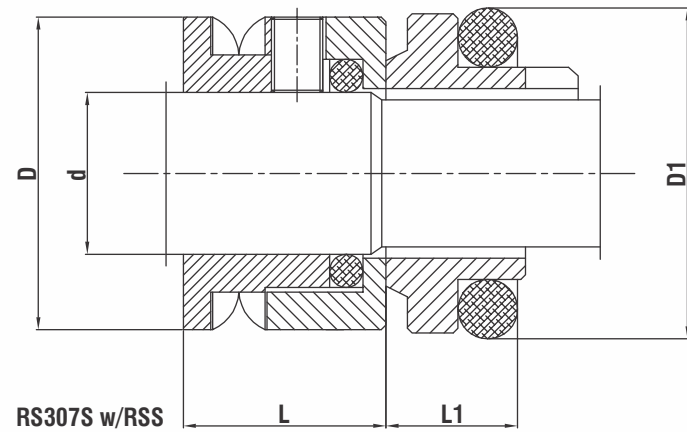


Rs307

COMPACT WAVE SPRING SEAL



FEATURES & BENEFITS:

- ▶ Single Seal
- ▶ Balanced
- ▶ Wave Spring
- ▶ Bi-Directional
- ▶ Short axial length
- ▶ Internal & external mounting allowed
- ▶ RS307S with carbide face shrink-fitted

OPERATING LIMITS:

- ▶ $d_1 = 10 - 100$ mm
- ▶ $p_1 = 1.2$ Mpa
- ▶ $t = -35 - 160^\circ\text{C}$
- ▶ $V_0 = 15$ m/s

STANDARD MATERIALS OF CONSTRUCTION:

- ▶ **Rotary Faces:**
 - ▶ Silicon Carbide, Tungsten Carbide, AISI 304, AISI 316
- ▶ **Stationary Seats:**
 - ▶ Silicon Carbide, Tungsten Carbide, Carbon Graphite, PTFE (alumina-fitted)
- ▶ **Springs, Collars, Face Housings:**
 - ▶ AISI 304, 316
- ▶ **Secondary Seals:**
 - ▶ EPDM, FEP, FPM, FEPM, NBR

STATIONARY SEATS:

- ▶ RSS (monolithic short seat)
- ▶ RSL (monolithic long seat w/ anti-rotation pin slot)
- ▶ RSLs (face shrink-fitted w/ anti-rotation pin slot)
- ▶ USS (monolithic short seat, to DIN 24960)
- ▶ USL (monolithic long seat w/ anti-rotation pin slot, to DIN 24960)
- ▶ USLS (face shrink-fitted w/ anti-rotation pin slot, to DIN 24960)

d	RS307/307S			RS-		US-	
	D	L	D1	L1	D2	L2	
10	21	18.0	18.1	5.5	21	7	
12	23	18.0	20.6	5.5	23	7	
14	25	18.0	23.1	6.0	25	7	
15	26	19.1	26.9	7.0	27	7	
16	29	19.1	26.9	7.0	27	7	
18	29	19.1	30.9	8.0	33	10	
19	32	19.1	30.9	8.0	35	10	
20	32	19.1	30.9	8.0	35	10	
22	35	19.1	35.4	8.0	37	10	
24	37	19.1	35.4	8.0	39	10	
25	41	19.1	38.2	8.5	40	10	
28	41	19.1	43.3	9.0	43	10	
30	47	19.1	43.3	9.0	45	10	
32	47	19.1	43.3	9.0	48	10	
33	48	19.1	53.5	11.5	48	10	
35	49	19.1	53.5	11.5	50	10	

d	RS307/307S			RS-		US-	
	D	L	D1	L1	D2	L2	
38	53	21.1	60.5	11.5	56	13	
40	55	21.1	60.5	11.5	58	13	
43	60	21.1	60.5	11.5	61	13	
45	60	21.1	65.5	11.5	63	13	
48	65	21.1	65.5	11.5	66	13	
50	65	21.1	72.5	11.5	70	14	
53	74	22.1	72.5	11.5	73	14	
55	74	22.1	72.5	11.5	75	14	
58	79	25.8	79.3	11.5	78	14	
60	79	25.8	79.3	11.5	80	14	
63	87	25.8	84.5	11.5	83	14	
65	87	25.8	84.5	11.5	85	14	
68	93	25.8	89.5	11.5	90	16	
70	93	25.8	89.5	11.5	92	16	
75	98	25.8	94.5	11.5	97	16	
80	104	25.8	99.5	11.5	105	18	
85	108	25.8	105.5	13.5	110	18	
90	113	25.8	111.5	13.5	115	18	
95	118	25.8	116.5	13.5	120	18	
100	123	25.8	119.5	13.5	125	18	

Dimensions in mm.